

The background features several overlapping, stylized green leaves with a textured, vein-like pattern. The leaves are rendered in various shades of green, from light to dark, and are arranged in a flowing, organic manner. The text is centered horizontally across the middle of the image, overlaid on the leaves.

ARA RAU TANGATA

What is Te Ara Rau Tangata?

Te Ara Rau Tangata Conference is an innovative new forum, where Tangata Whenua in the Western Bay of Plenty can generate discussions and seek solutions for their current and future living aspirations.

Ara Rau Tangata is the first of a series of solutions based conferences where participants can share knowledge, skills and experiences about Maori land and Maori planning.



Tino Ranggati atanga
Self Determination

WHAIA TE PAE

TAWHIITI

HOROHIA

—o mata ki a—
MIRETUAHIAHI

He Waka



Eke Noa



He kai kei
aku ranga

Ki te kahore he
Whakakitenga
ka ngaro te
iwi



What does our future look like?

As our community grows, where are our tamariki and mokopuna going to live in the future?

Can current Maori land resources sustain our future Maori population?

How do we better manage the water resource in the future - both quality and quantity?

Can we develop leasehold housing to subside our whanau into housing?

Do we need to think about higher density housing on our lands?

Do we need more Marae?

How will we maintain our cultural connections within urban spaces?

Are our mokopuna going to have access to traditional resources like kaimoana?

What does partnership with local government look like in the future?



24,759 or



of the Western Bay of Plenty
population

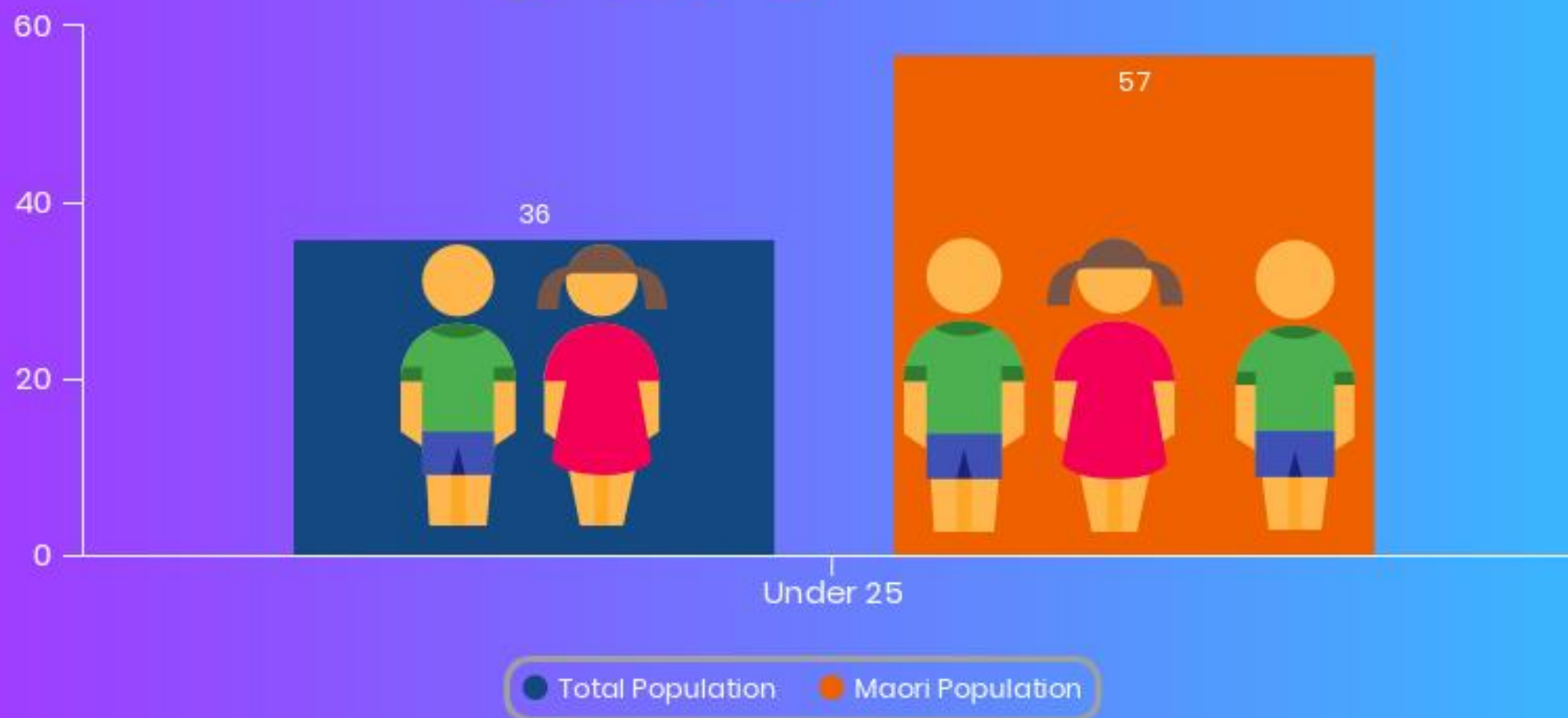
Are Māori



Maori population
will grow by
76% in 20
years compared
to **38%** for the
whole population

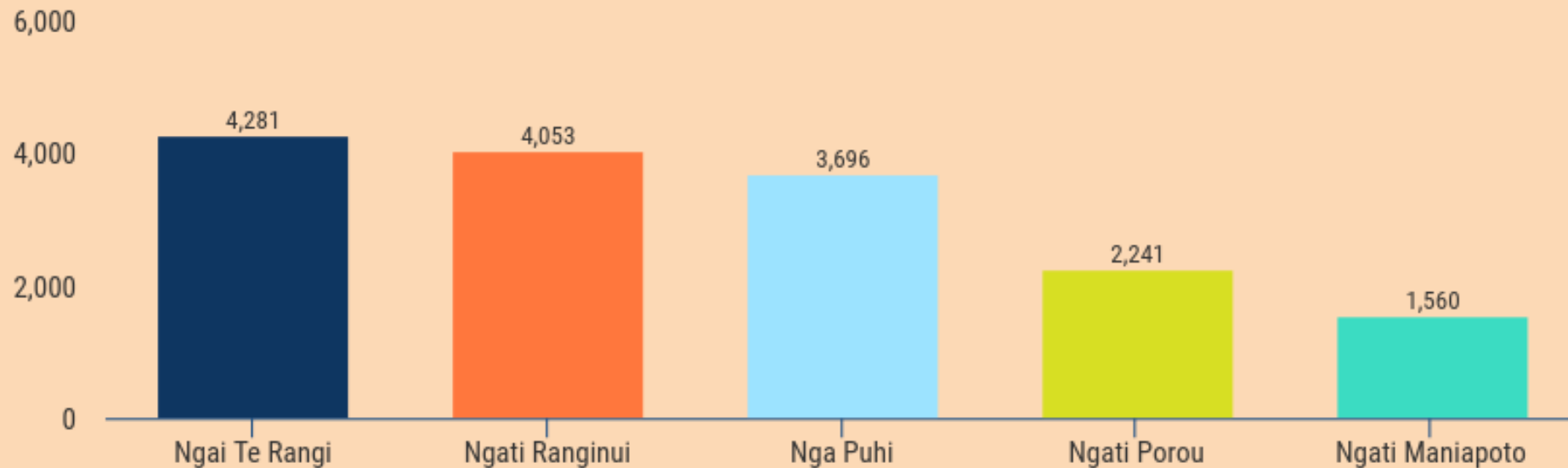
57% of the Māori Population is under 25

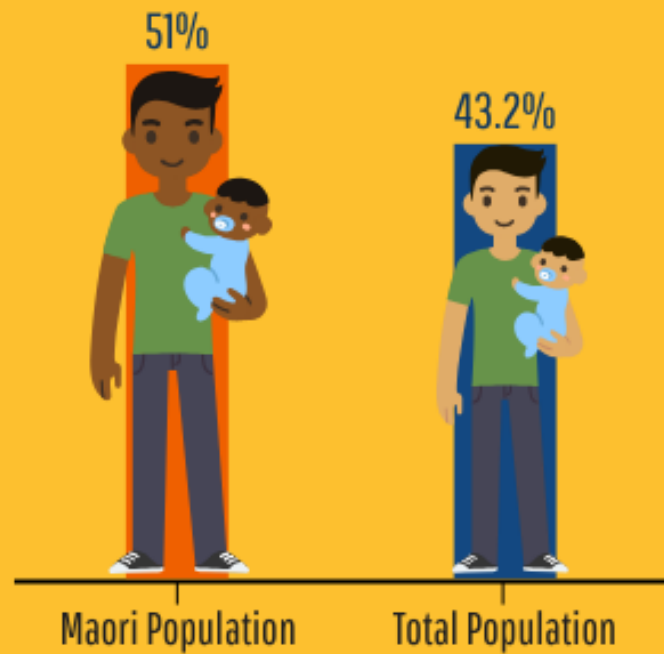
Compared to **36%** for the total population



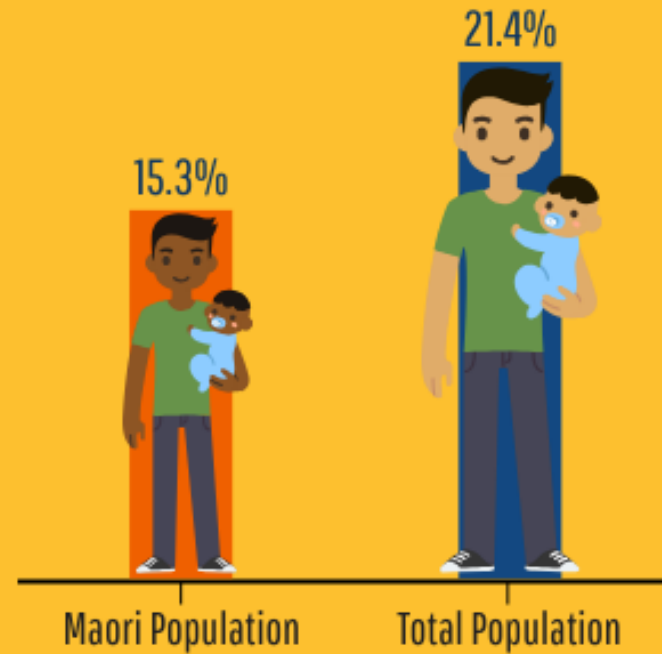
42.2%

of the Māori population are
Tangata Whenua





Earn > \$25,000
per annum



Earn < \$50,000
per annum

29% of Māori own their home



Compared to 52% for whole population

10.6% of land is Maori



97% of Maori land is rural

